

PlanMeca Bridge Installation

Load the Installer

- Go to <http://www.datacondental.com/downloads>
- Download the latest version of pcLink for Mac.
- Launch the installer.
- Under “Installation Type” click the Customize button (see *Figure 1.*)
- Click the “PlanMeca Bridge” button (see *Figure 2.*)
- Complete the installation.

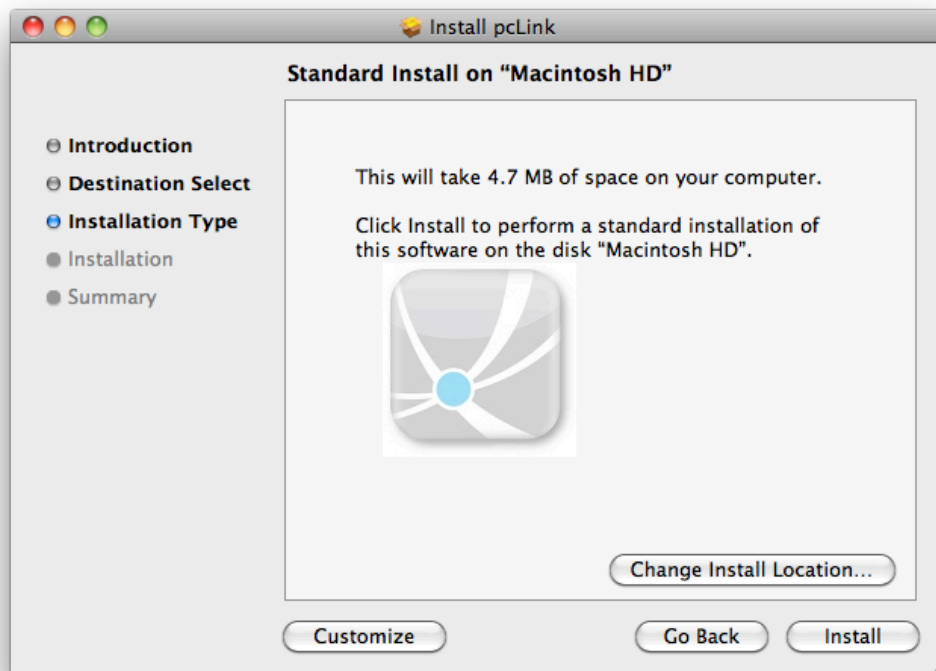


Figure 1

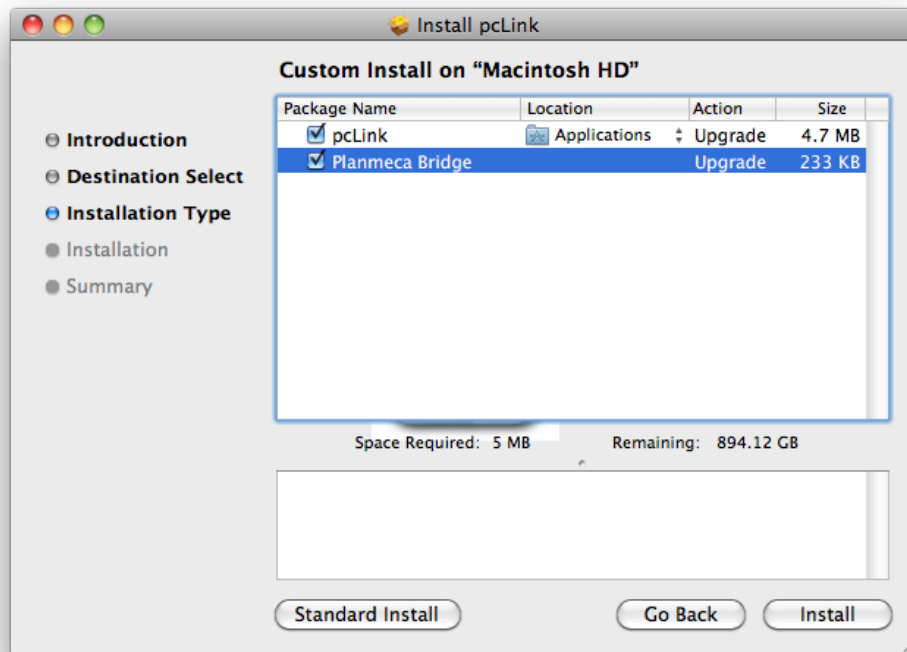


Figure 2

Create an Integration Shortcut

- Open pcLink.
- Click pcLink>Preferences on the Apple Menu Bar.
- Click the Go Menu segment control button.
- Click an unused button to create a new shortcut.
- Enter the information as shown in *Figure 3*.

Go Menu item enabled

Item description

Hint

Document name ...

Application name ...

Command-line arguments
One per line

```
[pa_id]
[pa_last_name]
[pa_first_name]
[(pa_birthday_yyyy+pa_birthday_mm+pa_birthday_dd)]
```

Create passfile

Passfile name ...

Convert name:[field] to tabbed columns

Patient focus required Done

Application name

Command-line arguments
One per line

```
[pa_id]
[pa_last_name]
[pa_first_name]
[(pa_birthday_yyyy+pa_birthday_mm+pa_birthday_dd)]
```

Figure 3

Customize the pcLink Menu Bar

- Open pcLink.
- Click Window>Customize Toolbar on the Apple Menu Bar.
- Drag the new PlanMeca button to the toolbar. See *Figure 4*.

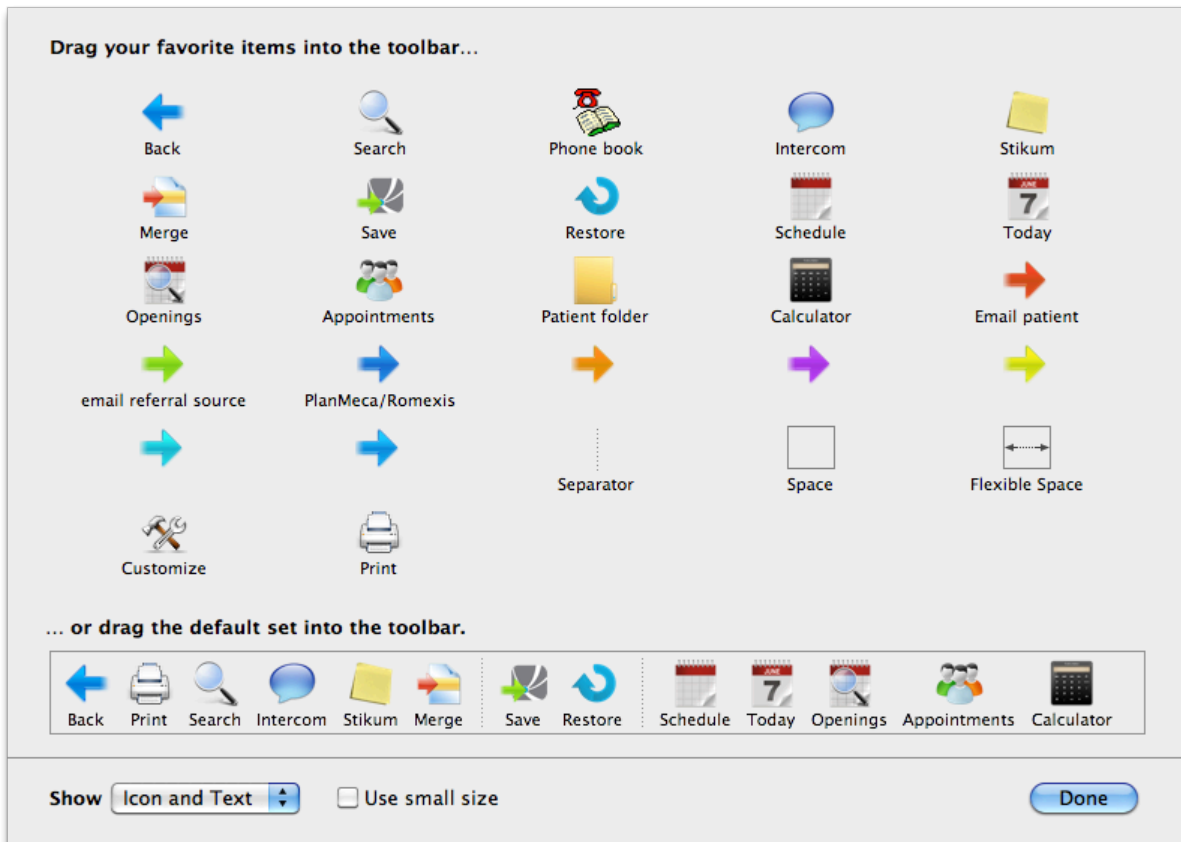


Figure 4

Using PlanMeca with Datacon

- Go to a Patient screen in Datacon. It is required that you launch PlanMeca from a Patient screen in Datacon.
- Click the PlanMeca button on the pcLink toolbar. PlanMeca will launch and minimize to the dock. Click the PlanMeca icon to bring the application to the front.
- The patient from Datacon will be the focus in PlanMeca.

Questions? Contact the staff at Datacon for help.
 www.datacondental.com
 Phone: (800) 773-7878
 Email: info@datacondental.com